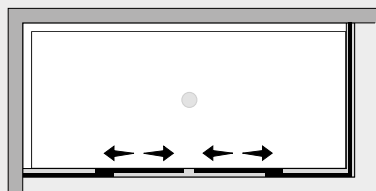


Free *P. doppio scorrevole c/lato fisso (comp. ad angolo)*



FR2S+FRFI



Caratteristiche prodotto

- CABINA DOCCIA MODELLO FREE
- SERIE FRAME (CON TELAIO)
- PORTA DOPPIO SCORREVOLE CON MECCANISMO DI SGANCIO
- CHIUSURA MAGNETICA CON GUARNIZIONE IN SILICONE TRASPARENTE



- LARGHEZZA 136 > 180 cm.
- PROFONDITA' 20 > 160 cm.
- ALTEZZA DI SERIE 197,5 cm. (MAX 197,5 cm.)



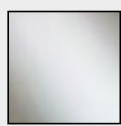
- ESTENSIBILITA' 20+20 mm. (largh.) 20 mm. (prof.)



- SPESSORE VETRO 6 mm.



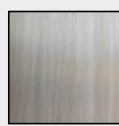
Finiture Profili



EXTRABRILL



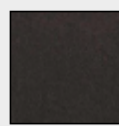
BIANCO
LUCIDO



EFF. INOX
SPAZZOLATO

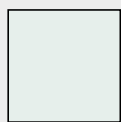


BIANCO
MATERICO



NERO
MATERICO

Finiture Vetri



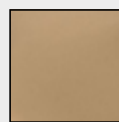
TRASPARENTE



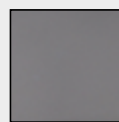
CINCILLÀ



SATINATO



BRONZO



FUMÈ



EXTRACHIARO

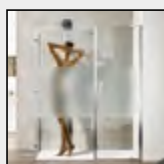


SGG TIMELESS®

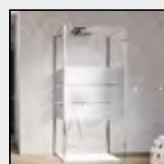


SGG MIRASTAR®

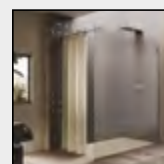
Lavorazioni speciali



SERIGRAFIA 1



SERIGRAFIA 2



SERIGRAFIA 3