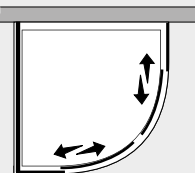


# *Free* Semicircolare 2 scorrevoli c/lato fisso (comp. ad angolo)



## *Caratteristiche prodotto*

**FRSC R55 +FRFI**



- CABINA DOCCIA MODELLO FREE
- SERIE FRAME (CON TELAIO)
- PORTA DOPPIO SCORREVOLE CURVO R.55 CM CON MECCANISMO DI SGANCIO
- CHIUSURA MAGNETICA CON GUARNIZIONE IN SILICONE TRASPARENTE



- LARGHEZZA 77 > 79 cm. / 87 > 89 cm.
- PROFONDITA' 77 > 79 cm. / 87 > 89 cm.
- ALTEZZA FISSA 197,5 cm.



- ESTENSIBILITA' 20+20 mm.



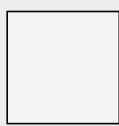
- SPESSORE VETRO 6 mm.



## *Finiture Profili*



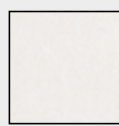
EXTRABRILL



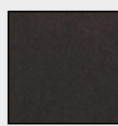
BIANCO  
LUCIDO



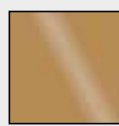
EFF. INOX  
SPAZZOLATO



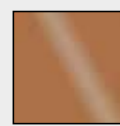
BIANCO  
MATERICO



NERO  
MATERICO



ORO



RAME

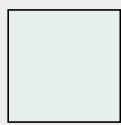


TITANIO



BIANCO  
PERLATO

## *Finiture Vetri*



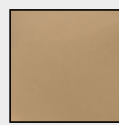
TRASPARENTE



CINCILLÀ



SATINATO



BRONZO



FUMÈ



EXTRACHIARO

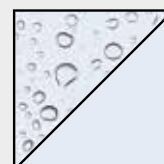
## *Lavorazioni speciali*



SERIGRAFIA 1



SERIGRAFIA 2



SGG TIMELESS®