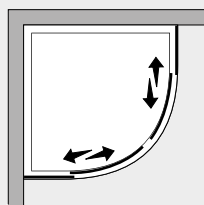


Free Semicircolare 2 scorrevoli (comp.)



Caratteristiche prodotto

FRSC R55



- CABINA DOCCIA MODELLO FREE
- SERIE FRAME (CON TELAIO)
- PORTA DOPPIO SCORREVOLE CURVO R.55 CM CON MECCANISMO DI SGANCIO
- CHIUSURA MAGNETICA CON GUARNIZIONE IN SILICONE TRASPARENTE



- LARGHEZZA 77 > 79 cm. / 87 > 89 cm.
- PROFONDITA' 77 > 79 cm. / 87 > 89 cm.
- ALTEZZA FISSA 197,5 cm.



- ESTENSIBILITA' 20+20 mm.



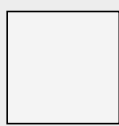
- SPESSORE VETRO 6 mm.



Finiture Profili



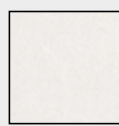
EXTRABRILL



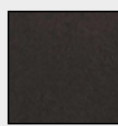
BIANCO
LUCIDO



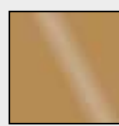
EFF. INOX
SPAZZOLATO



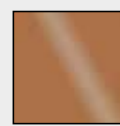
BIANCO
MATERICO



NERO
MATERICO



ORO



RAME

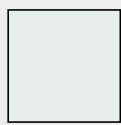


TITANIO



BIANCO
PERLATO

Finiture Vetri



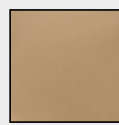
TRASPARENTE



CINCILLÀ



SATINATO



BRONZO



FUMÈ



EXTRACHIARO

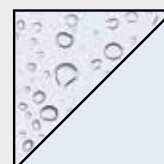
Lavorazioni speciali



SERIGRAFIA 1



SERIGRAFIA 2



SGG TIMELESS®