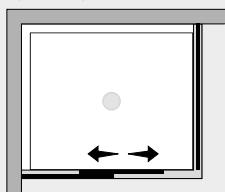


Quadro *P. scorr. c/lato fisso (comp. ad angolo)*



QSNI+QUFI



Caratteristiche prodotto

- CABINA DOCCIA MODELLO QUADRO
- SERIE FRAME (CON TELAIO)
- PORTA SCORREVOLE CON MECCANISMO DI SGANCIO
- CHIUSURA CON GUARNIZIONE IN SILICONE TRASPARENTE



- LARGHEZZA 96 > 180 cm.
- PROFONDITA' 20 > 160 cm.
- ALTEZZA DI SERIE 198 cm. (MAX 198 cm.)



- ESTENSIBILITA' 25+25 mm. (largh.) 25 mm. (prof.)



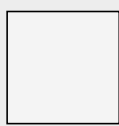
- SPESSORE VETRO 6 mm.



Finiture Profili



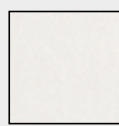
EXTRABRILL



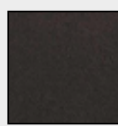
BIANCO
LUCIDO



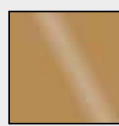
EFF. INOX
SPAZZOLATO



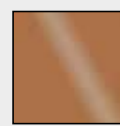
BIANCO
MATERICO



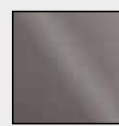
NERO
MATERICO



ORO



RAME

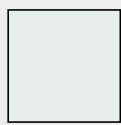


TITANIO



BIANCO
PERLATO

Finiture Vetri



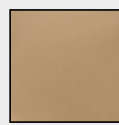
TRASPARENTE



CINCILLÀ



SATINATO



BRONZO



FUMÈ



EXTRACHIARO

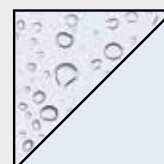
Lavorazioni speciali



SERIGRAFIA 1



SERIGRAFIA 2



SGG TIMELESS®