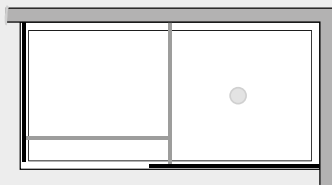


Vitrum 2 lati fissi



VT1L6PFx2



Caratteristiche prodotto

- CABINA DOCCIA MODELLO VITRUM
- SERIE MINIMAL (SENZA TELAIO)
- DUE VETRI FISSI DISPOSTI A 90°



- LUNGHEZZA 20 > 140 cm.
- ALTEZZA DI SERIE 205 cm. (MAX 205 cm.)



- ESTENSIBILITA' 15 mm.



- SPESSORE VETRO 6 mm.



Finiture Profili



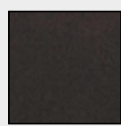
EXTRABRILL



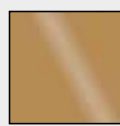
EFF. INOX
SPAZZOLATO



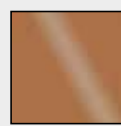
BIANCO
MATERICO



NERO
MATERICO



ORO



RAME



TITANIO

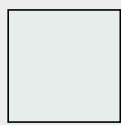


BIANCO
PERLATO



MAZZETTA
IDEAGROUP

Finiture Vetri



TRASPARENTE



SATINATO



BRONZO



FUMÈ



EXTRACHIARO

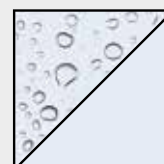
Lavorazioni speciali



SERIGRAFIA 1



SERIGRAFIA 2



SGG TIMELESS®