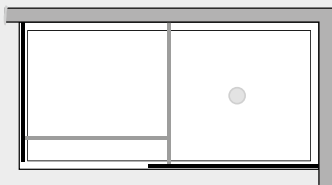


# *Vitrum* 2 lati fissi



VT1L8PFx2



## *Caratteristiche prodotto*

- CABINA DOCCIA MODELLO VITRUM
- SERIE MINIMAL (SENZA TELAIO)
- DUE VETRI FISSI DISPOSTI A 90°



- LUNGHEZZA 20 > 180 cm.
- ALTEZZA DI SERIE 205 cm. (MAX 220 cm.)



- ESTENSIBILITA' 15 mm.



- SPESSORE VETRO 8 mm.



## *Finiture Profili*



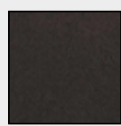
EXTRABRILL



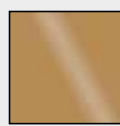
EFF. INOX  
SPAZZOLATO



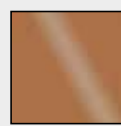
BIANCO  
MATERICO



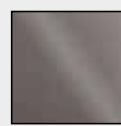
NERO  
MATERICO



ORO



RAME



TITANIO

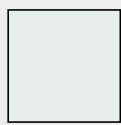


BIANCO  
PERLATO



MAZZETTA  
IDEAGROUP

## *Finiture Vetri*



TRASPARENTE



SATINATO



BRONZO



FUMÈ



EXTRACHIARO

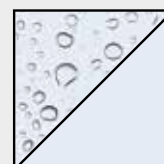
## *Lavorazioni speciali*



SERIGRAFIA 1



SERIGRAFIA 2



SGG TIMELESS®